



Medawar Drive, London, NW7 1UB

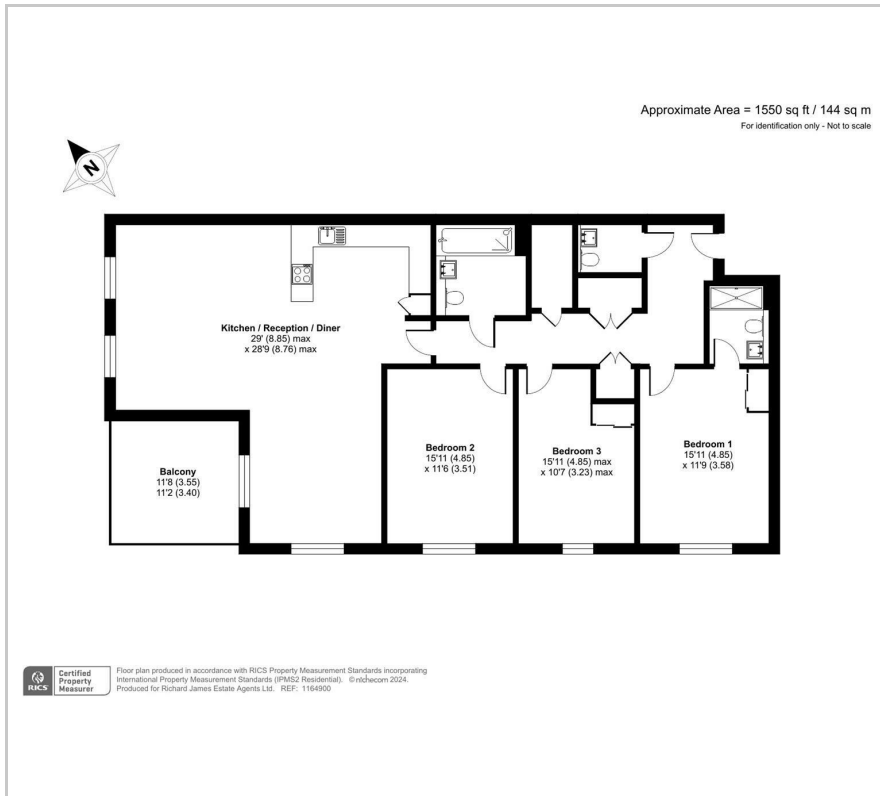
£875,000 - Leasehold

****CHAIN FREE**** A stunning 3 bedroom, 2 bathroom 1550 sq ft apartment situated on the upper ground floor (step-free entry) of this modern purpose built block within the Ridgeway Views development. The property features a fantastic 29ft dual aspect reception room with open-plan kitchen and direct access to a large balcony with beautiful views towards Totteridge Valley. Further benefits include a ft master bedroom with en-suite shower room, bespoke fitted units, a guest W.C., extensive storage and 1 secure, underground parking space. Set within 47 acres and surrounded by an abundance of green communal space, walking trails and several children's play areas, the development is also to offer a concierge service and an on-site resident's gym.

Lease: Approx. 993 years
Ground Rent: N/A
Service Charge: £4900 per annum

- Purpose built
- 3 bedrooms, 2 bathrooms (1 en-suite)
- 1550 sq ft
- Large balcony
- Guest W.C.
- Secure underground parking space
- Extensive storage
- Countryside setting
- Communal gardens
- Barnet council tax band G

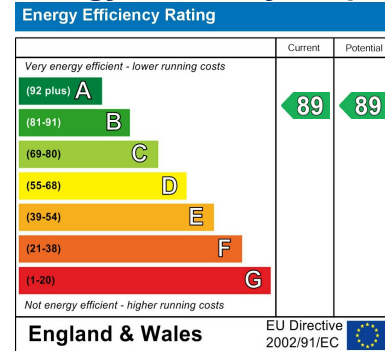
Floor Plan



Area Map



Energy Efficiency Graph



These particulars, whilst believed to be accurate are set out as a general outline only for guidance and do not constitute any part of an offer or contract. Intending purchasers should not rely on them as statements of representation of fact, but must satisfy themselves by inspection or otherwise as to their accuracy. No person in this firm's employment has the authority to make or give any representation or warranty in respect of the property.

Finchley Branch

181a Squires Lane,
Finchley,
London N3 2QS
Tel 020 8343 2111

Hendon Branch

16 Central Circus Parade,
Queens Road, Hendon,
London NW4 3AS
Tel 020 8202 0808

Mill Hill Branch

7 Thornfield Parade,
Holders Hill Road, Mill Hill,
London NW7 1LN
Tel 020 8349 3030

